

Signature London The J Marylebone

Signature London The J Marylebone, 233-237, Old Marylebone Road, Paddington, City of Westminster, Greater London, England, NW1 5QT, United Kingdom



Experience refined comfort and timeless elegance at Signature London, The J Marylebone. Nestled in one of London's most sophisticated neighborhoods, this boutique-style stay offers a perfect blend of modern luxury and classic British charm. Surrounded by stylish cafes, designer boutiques, and iconic landmarks, guests can enjoy both convenience and tranquility. Whether you're visiting for business or leisure, this property provides a premium stay with thoughtfully designed interiors, exceptional service, and a relaxing ambiance.

Tour Facts

Group Size:

14

Duration:

3

Language:

English, French, Spanish

Tour Type:

continuous

Tour Itinerary

Day 1 : Arrival & Check-in



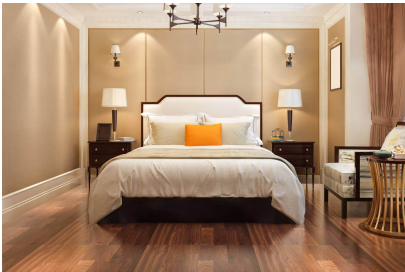
Arrive in London and check in to your hotel in Marylebone. Enjoy a relaxing evening exploring nearby cafes and streets.

Day 2 : Explore London



Visit nearby attractions, shopping districts, and cultural landmarks. Enjoy local dining experiences.

Day 3 : Leisure & Departure



Spend your final morning at leisure before check-out and departure.